



replumbs.com



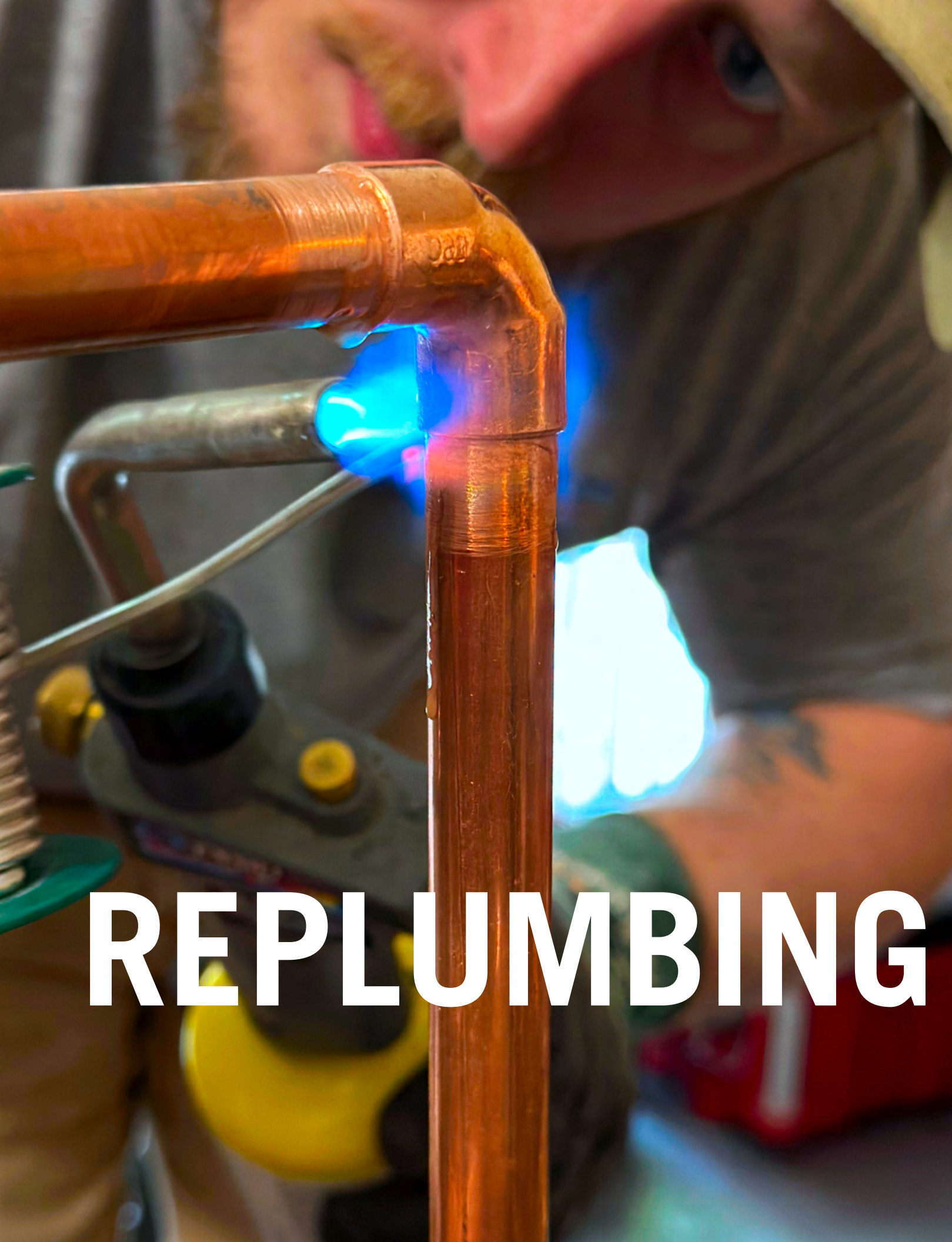
**Instant Online Quote Tool at [Replumbs.com](https://replumbs.com)**

**28,000+ Occupied Homes Replumbed**

**32+ Years of Unparalleled Expertise**

**12 Million+ Feet of Pipe Replaced**





# REPLUMBING



For **32+ years**, we've created comprehensive solutions for homeowners burdened with faulty water systems. We've Replumbed over **28,000 occupied units**, adding up to more than **12 million feet of pipe**.

When you encounter minor plumbing issues - like a broken faucet handle or a clogged drain - a local plumber can likely make the repair. But when a whole system replacement is needed - often because of frequent leaks or a property sale - higher qualifications are required to eliminate water system failures from a home entirely.

As part of our Turnkey Process, every part of every project is taken care of in-house, by our own employees. **We eliminate subcontractors** to provide unmatched quality control and a seamless end-to-end experience for our clientele. Each step of our process is always a step in the right direction. From **permits**, to **plumbing**, to **paint**.

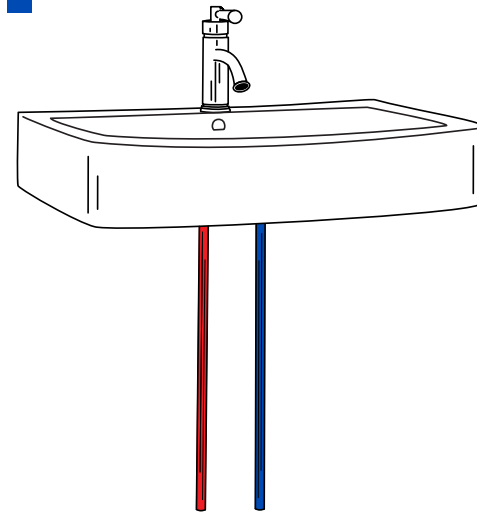
# ALL OF

# COLORADO.

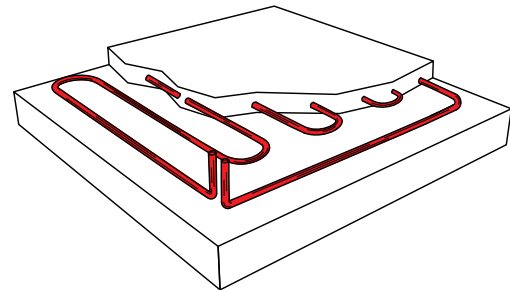
# Solutions For Every Pipe Problem.

## Potable Systems

Problems with daily hot and cold water systems might consist of low and unevenly distributed water pressure, discolored and foul-tasting water, undesirable water temperature, and leaks. Leaks can range from small drips that go unnoticed for some time, to pipe bursts that result in flooding and extensive water damage. We provide a range of replacement options to meet the needs of our clientele, and our procedures are flexible so the inconvenience of a Replumb becomes as convenient as possible. Residents never have to relocate, and everyone has running water after workdays and through the weekend.



## In-Floor & Staple-Up Hydronic Heating Systems



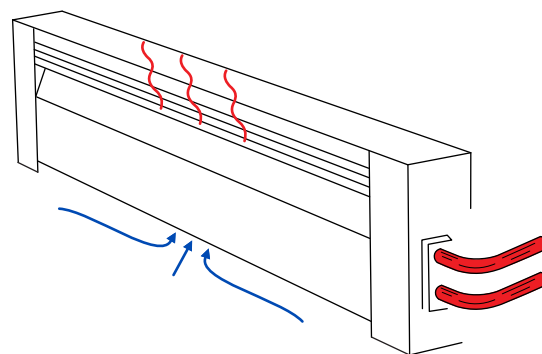
DWV piping fails over time due to several factors - including hot water, acidic water, oxidation in water, and corrosive chemicals that are disposed of in the drainage system. Many original DWV systems lack proper cleanouts and vents, and have old design flaws that have been revised in modern plumbing codes. It's common for significant blockages to develop in older buildings, especially in multistory homes. Nonetheless, it's not uncommon for newly constructed homes to have poorly designed DWV systems, and they experience the same problems more frequently than we'd expect. These issues make maintenance difficult for homeowners and plumbers who lack the resources to repair entire systems. Our Turnkey Process includes the reconstruction of every

## Hydronic Heat Registers

Hydronic heating systems undergo extreme temperature variations and were often installed without consideration of an oxygen barrier and the galvanic corrosion process. We replace heat piping and components in nearly all types of hydronic heating systems including:

- **Baseboard register systems**
- **Stapled up under floor radiant systems**
- **In-floor radiant systems poured in lightweight concrete**

A formal bid proposal will require a site visit from our team. Feel free to call or email to schedule your bid appointment.



## For Long-Lasting Solutions, Call Replumb Specialties.

From site-built homes and condominiums, to townhomes or apartments complexes – every pipe problem is unique, and each comes with its own set of requirements and resident needs. Even properly maintained and recently constructed homes can experience the most prominent water system issues and failures - which are often disruptive to residents, and costly for owners and management teams. We specialize in designing and implementing dependable and efficient water systems that our clients can rely on for decades to come. Every system installed by our team comes with a manufacturer's warranty, and a lifetime workmanship and labor warranty from Replumb Specialties Inc.



“I would give RSI 100 stars if I could! Milo and his crew did an EXCELLENT job. I've hired many plumbers in the past, but even the best plumbers don't compare to RSI. Their prices, quality of work, knowledge, professionalism, courtesy, promptness, team work and ability to deal with multiple challenging personalities in order to complete an entire Replumb on multiple joined condos turned a VERY stressful situation into a PLEASURE. They exceeded expectations every day and went above and beyond to satisfy every additional request made. You can't tell AT ALL where the walls and ceilings were open as they made them all good as new! I HIGHLY recommend this honest hard working company and am grateful they were referred to me by a close friend who knew they were the BEST!!! I would be happy to give referrals for future clients.”

**Gigi Hill**  
Homeowner | Colorado Springs

## A Few of the Many

# Failing Pipe Systems

## Polybutylene

Polybutylene is extremely susceptible to deterioration from chlorine and other common water additives. The pipe shrinks and becomes brittle, causing the crimp ring to lose calibration on the connection between the pipe and the fitting. In other words, Polybutylene corrodes from the inside out, and failures come without warning. These failures can range from minor leaks to sudden catastrophic floods. Since the cause of failure is chemical and occurs at a molecular level, if your Polybutylene hasn't yet failed, it will in the future. As the issue with Polybutylene failure has become more common and widespread over the last decade, many insurers and finance companies require its replacement for new/renewal policies and loan covenants. Class action claims officially ended in 2009.



## Pex-Al-Pex

There were more than 300,000 installations of Pex-Al-Pex piping between 1995 and 2007. The brass fittings that join the three-layer piping contain a high amount of zinc, and are therefore susceptible to dezincification. The aluminum layer (not a solid layer, but instead an overlapped sheet of aluminum) may become kinked and perforated during transport or installation, and often punctures the thin layers of Pex. Additionally, galvanic corrosion occurs when the aluminum layer touches the brass fittings. For a deeper dive into Failing Pipe Systems metallurgy, visit [replumbs.com](http://replumbs.com). Class action claims officially ended on January 9<sup>th</sup>, 2020.



## Copper

Copper is a conductive material, so it can react with minerals and adverse alkalinity present in our water. Galvanic corrosion takes place – which is the corrosive process that occurs when dissimilar metals come into contact – and it rapidly increases the development of cavitations. Over time, these cavitations progress into small holes, causing pinhole leaks. These leaks often worsen and escalate into bursts. Corrosion in copper pipes can also cause discolored and bad tasting water, as well as low and unevenly distributed water pressure.



## Cast Iron DWV

As cast iron DWV (drain waste & vent) piping reaches the age of 30 or 40+ years, iron oxide (rust) develops on the inner wall of the pipe. Tuberculation - a form of iron oxide pitting - occurs and reduces water flow. Reduced water flow intensifies tuberculation, and overtime this causes the pipe to clog and often crack. Frequent drain backups and cracks in the pipe are clear indicators that replacement is imminent.



## Galvanized Steel

Galvanized steel piping was manufactured and installed between 1880 and 1960. The tubing was coated in zinc as an effort to slow or prevent corrosion. The zinc coating was not pure, and carried substances that are harmful to users – prominently lead. As the zinc coating wears off, iron oxide (rust) develops in the inner walls of the pipe, resulting in water contamination and a decrease in water flow. The zinc coating simultaneously releases its own harmful substances into the water. Iron oxide causes discolored and bad tasting water, as well as stains in porcelain sinks, toilets, and showers.



## Epoxy-Lined Pipes

Since the early 2000s, epoxy lining has been used as an alternative to replacing deteriorating pipes. This has proven to be a temporary fix at best. The epoxy detaches from the pipe's interior and contaminates the water supply, which has raised health and environmental concerns. The loose epoxy also clogs 90° turns, tees, and more prominently valves in showers, toilets, and sinks. There are several ongoing lawsuits at different stages of litigation related to epoxy-lining pipes.



## Additional Services

We welcome the opportunity to help our Replumb customers enjoy significant savings on deferred plumbing and/or mechanical repairs and replacements around their homes. Trip charges are eliminated, and our labor rate is discounted for completing certain additional projects during the Replumb process including:

- **Moen Posi Temp tub shower valve with Chateau trim replacements**
- **Water heater replacements: gas, electric, and tankless**
- **New main ball valve shut off installation**
- **New whole-house pressure regulator installation**
- **And more...**



Tub Shower Valve



Water Heater

# Who We Serve



## Residential Properties

Homeowners looking to prevent or resolve water system-related issues are often stuck hiring multiple contractors in order to complete a Replumb. Some homeowners hire a 'repipe' company, without realizing these companies subcontract their projects out piece by piece. Consequently, owners experience longer project durations, increased cumulative costs, and inconsistent or poor work quality. Our Turnkey Process handles every Replumb with one contract, and one team. We diligently address every detail, so our clients feel confident everything is installed and finished correctly.

Replumbing a home often increases its value and can save a real estate associated sales contract in the case the home has a defective or failing water system installed.



## Condos & Townhomes

A water system overhaul is nothing short of an investment for owners. In many ways, a Replumb serves as an additional insurance policy. Property values often see a significant increase, and replacing a failure-prone water system mitigates the risk of expensive repairs from water damage. A minor leak can result in the growth of mold over time, and a sudden burst can result in structural damage.

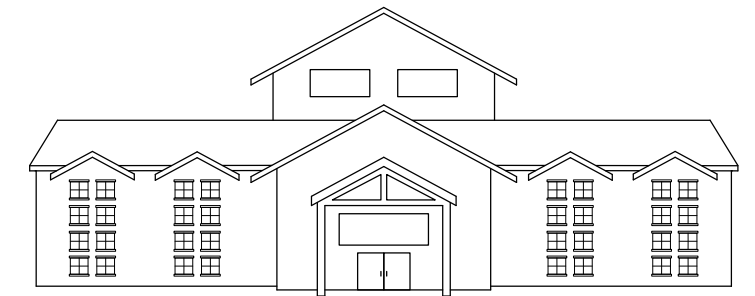
We offer numerous educational resources and installation options for our clients so they can make decisions suitable to their needs and within their budget.



## Apartments

Replumbs can be difficult to coordinate and implement in large-scale multifamily housing. Management teams are often challenged with resident approval and turnover. Meeting the needs and requests of each resident can be a demanding and difficult task.

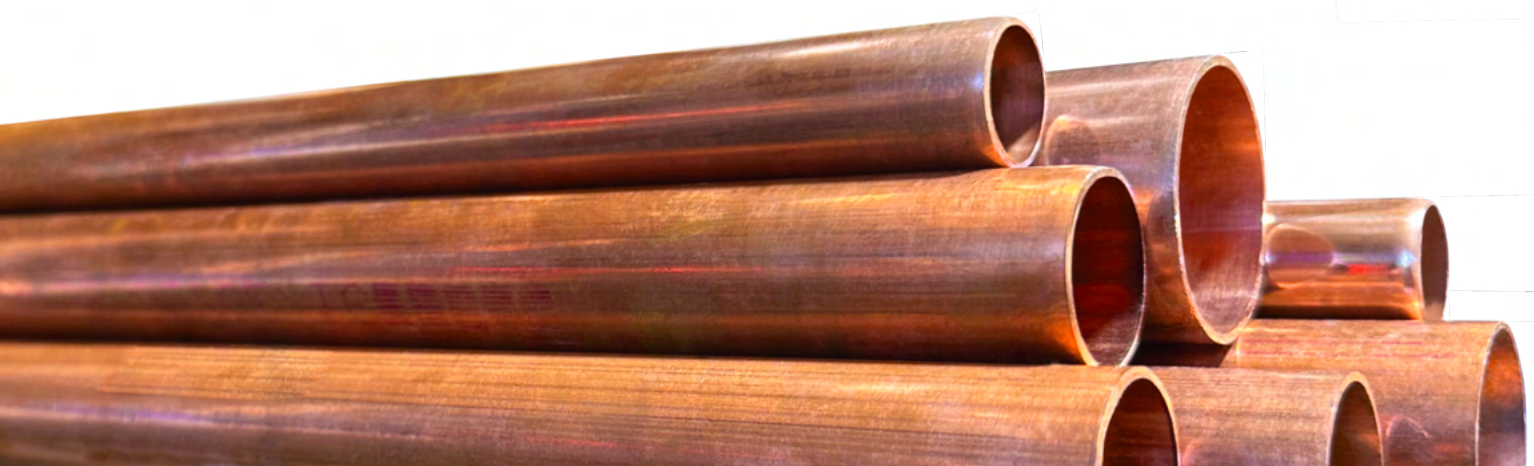
That's why we create a custom communications package for each Replumb. When a building is in the midst of a major surgery, clear and effective communication with residents is imperative for management teams. We communicate with residents and staff frequently via email and text notifications, and a dedicated project website. Our communication system connects to several of our team members, guaranteeing a swift response to any inquiry.



## Assisted-Living Facilities

Providing a comfortable and preferably maintenance free environment for our elderly has always been a priority as those closest to us become dependent for daily activities and function.

As potable, waste and HVAC piping begins to fail in an assisted living facility, time is of the essence, and procedural replacement methods are critical. Hot and cold water and heat or cooling need to be restored quickly during such repairs. We carefully analyze systems and devise a plan for the most efficient way to perform complete systems replacements throughout these buildings. Our track record of success speaks for itself.

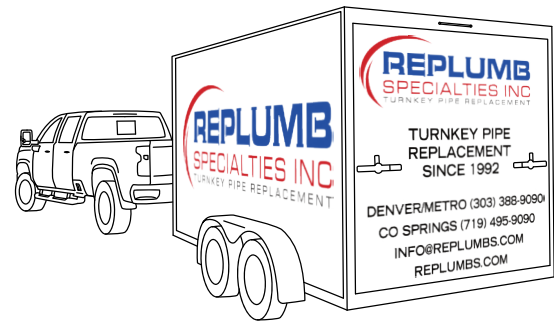


“We bought a new house in July of this year, and during inspection found that the pipe was Kitec, a product that is no longer being used in new builds because of its tendency to literally explode in the walls. Obviously we needed to get this taken care of sooner than later. Our inspector recommended Jamey's team at Replumb Specialties. We did an online, instant quote, and then Jamey personally emailed me a proper quote. The two matched almost identically. We decided as soon as we could afford the work, we would. I thought a job like this -- literally pulling all the old flexible Kitec out of the walls and replacing with new flexible non-Kitec pipe (with a 25 year warranty!) would take a couple weeks at least. They started Monday. As I type this, it's 11am on Thursday, and they're finishing the last of their work and cleanup. If you have Kitec in your walls, call these guys. They're extremely good at what they do, super friendly, show up on time, work hard, and do a really excellent job. I'm recommending them to everyone I know.”

**Sam Sunshine-DeWitt**

Homeowner | Denver





## 1. Material and Equipment Staging

Materials and equipment are stored in a company trailer, or sometimes multiple trailers or a portable conex for larger projects. Trailers are typically left on-site through the duration of the project, but can be moved off-site after working hours if needed.



## 2. Work Areas Are Protected

Debris is contained using a dust mitigation process, so residents' living areas and personal belongings are protected and stay clean. Residents have access to all areas in their home after workdays and through the weekend.



## 3. Drywall and Tile Openings Are Created

We preserve the removed sheetrock, and when necessary we remove tile without any damage. We reuse these pieces during repairs for a seamless finish. This process reduces repair costs for our clients.



## 4. The New Water System Is Installed

We provide and install the best plumbing material available in the industry today. Replumb Specialties warranties every system for the lifetime of the owner.

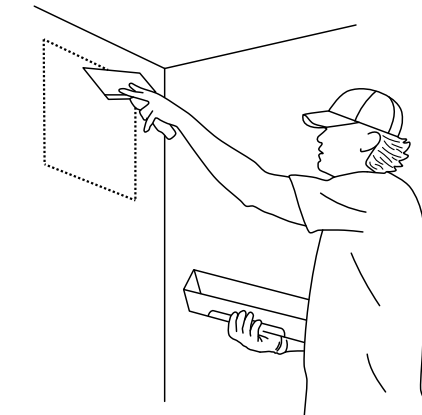


## 5. Inspections Are Complete With the Local Building Department

Our team coordinates with building departments and their inspectors so every project progresses smoothly. Every system installed by our team meets or surpasses the most recent code requirements relative to the property location.

## 6. Drywall and Tile Openings Are Restored

Drywall openings are patched using the sheetrock that was originally removed, and wall texture is matched to surrounding areas. Tile pieces are restored to their original position, and grout is matched to the original color.



## 7. Paint Is Computer-Matched and Restored

We use a computer matching process or existing paint codes to obtain a paint match for any affected areas. Every Replumb is paint restored with a best match possible.

## 8. Work Areas Are Cleaned Daily

Living in your home during the Replumb process is very practical. We implement a quick cleanup and organize our equipment at the end of each workday. We leave our protective material out of the way at the end of each workday and remove it completely when your Replumb is finished.

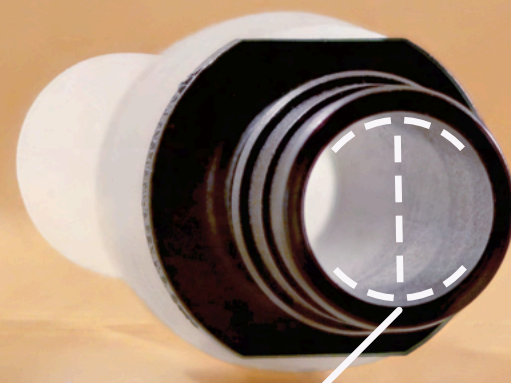


# Uponor AquaPEX™ Pipe With ProPEX™ Fittings



- **LIFETIME WARRANTY** from Replumb Specialties
- 25-Year Uponor Manufacturer's Warranty (pipe and fittings)
- Engineered polymer, non-conductive material
- Best for homes with 3+ bathrooms or 3+ residents
- Overall water flow volume is maximized - Example: when 2 showers and a washing machine are running simultaneously, residents will notice less water volume drop

3/4 Inch ProPEX Fitting



Inner Diameter: 16mm

# Uponor AquaPEX™ Pipe With Alternative Fittings



3/4 Inch Alternative Fitting



Inner Diameter: 12mm

- **LIFETIME WARRANTY** from Replumb Specialties
- 10-Year Uponor Manufacturer's Warranty (pipe only)
- 8% overall Replumb project cost savings
- Engineered polymer, non-conductive material
- Best for homes with 3 or fewer bathrooms or 3 or fewer residents - Example: when 2 showers and a washing machine are running simultaneously, residents may notice a loss in water volume

# Replumb Specialties Inc. Warranty Certificate

## Warranty Information

Depending on which system the homeowner chooses, Uponor provides a 10-year material warranty (on standard system, piping only) or a 25-year material warranty on their ProPEX system (piping and fittings). Such warranties can be found at [replumbs.com/uponorwarranty](https://replumbs.com/uponorwarranty) or by using the QR code below. There is no manufacturer's warranty associated with copper systems, or lavatory and water closet shutoffs.

Replumb Specialties Inc. hereby warrants, for the lifetime of the original owner, all labor and workmanship associated with the installation of said material. Warranty transfer shall extend to the 'buyer' in incidents where the Replumb is engaged to satisfy a buyer-seller transaction, or if such transaction occurs within 1 year of Replumb Specialties Inc.'s work. This warranty does not cover any existing plumbing fixtures or other materials not installed as new by Replumb Specialties Inc. - including water softeners, reverse osmosis units, lavatory faucets, tub/shower valves, outdoor spigots, washing machine valves, etc.

Freezing, infestation, neglect, and/or other contractual work/alteration shall void the labor and material portion of this warranty. The owner/resident must ensure that all reasonable precautions are taken to avoid freeze-related damage to the new plumbing system. Failure to do so shall void all related warranties.

There are and shall be no other expressed or implied warranties, including warranties of habitability. Nothing in this warranty or the scope of work is intended to limit any warranty on materials used in performing the work, which may pass to the homeowner, homeowner's agent, or current resident.

CLIENT NAME

ADDRESS

INSTALLED BY

DATE



[replumbs.com/uponorwarranty](https://replumbs.com/uponorwarranty)



[replumbs.com/warranty](https://replumbs.com/warranty)

# Replumb Finance Options

Use the QR code to get your offer ▶



## 0% APR Credit Card

- Clients receive a physical credit card
- 0% introductory APR available for up to 18 months
- Clients must have a 680+ credit score to apply
- No pre-payment penalties
- Best option for our customers

## Project Loans Through LendKey

- Payment is sent directly to Replumb Specialties
- APR starts as low as 8.93% and can be as high as 15.18%
- Term lengths between 3 – 20 years
- Clients must have a 700+ credit score to apply
- No pre-payment penalties
- Loan amounts from \$5,000 – \$125,000

## Personal Loans

- Payment amount is sent directly to our clients
- APR starts as low as 7.99% and can be as high as 36.99%
- Term lengths between 1 – 12 years
- No pre-payment penalties
- Loan amounts from \$1,000 – \$250,000

[Replumbs.com/Finance](https://replumbs.com/finance)

## Financing Calculator

Project Cost

\$8,000

Your Credit Score

Excellent (680+)

Estimated

**\$444.44/mo.**

Principal	\$8,000.00
Interest	\$0.00
<b>Total Loan Cost Estimate</b>	<b>\$8,000.00</b>

Get Your Personalized Rates

This usually takes 2 minutes or less and will not affect your credit score.

Get Financing Options →

The estimated monthly payment is for information purposes only. It assumes the customer opts the 0% APR credit card and is calculated using an 18 month payment period. The estimate does not account for other loan options, missed payments, or the use of deferral or forbearance.

Credit Range	Prequalification Rate	Est. APR Range	Loan Amount	Loan Term	Lending Partners
Excellent 741 – 850	89%	7.9% – 19%	\$1,000 - \$250,000	2 – 12 Years	8
Good 681 – 740	80%	10.5% – 26.7%	\$1,000 - \$250,000	2 – 12 Years	8
Average 661 – 680	70%	16.8% – 34.8%	\$1,000 - \$100,000	1 – 7 Years	9
Poor 550 – 660	58%	20.5% – 36.9%	\$1,000 - \$50,000	1 – 5 Years	10

[replumbs.com/finance](https://replumbs.com/finance)

# A Few Recently Completed Projects



All 55 Ski Inn Condominiums



22+ Homes In Castle Pines



39 Condominiums At Promontory Pointe



68+ Homes In Peregrine



All 25 Dulany Condominiums



160+ Homes In Highlands Ranch



135+ Homes In Wagon Trails



465 Units At Waterfront Apartments



41 Autumn Heights Townhomes



310+ Homes and Condominiums In Boulder



230+ Homes In Briargate



780+ Homes and Apartments In Westminster



27+ Homes In Cherry Hills Village



368+ Homes and Apartments In Mountain Shadows/Rockrimmon



44+ Homes In Pinecrest



110+ Homes In Thornton



All 33 Units At Ptarmigan House Condominiums



114+ Homes In Widefield



64+ Piñon Sun Condominiums & Townhomes



16 Units At The Meadows Condominiums



27+ Homes In Crystal Park



16+ Homes In Telluride



120+ Homes In Evergreen



2,080+ Homes and Apartments In Jefferson County

“I want to give the highest recommendation to condo owners for the work completed by Replumb Specialties Inc. Without question, their installation was timely and expertly accomplished. As you may not know, they not only replace the plumbing, but also repair any wallboard openings that are required. You simply cannot tell where they actually cut into the walls at all. Most impressive though, was their ability to work in a positive way with the lower unit owner which required their access to eliminate the polybutylene that was located between the first and second floor unit. I strongly recommend that they be added as a preferred vendor for other owners to consider when completing this work. I also felt they were very responsive to all emails, were on time for every day of work, and started/finished as they said they would. The water to our building was off only about 25 minutes as they quickly finished the needed work and allowed the vendor to turn the water back on to minimize the disruption to other building unit owners. Simply, first rate in all respects.”

**Mark Keegan**  
Littleton, CO

# Replumb Today, With Tomorrow In Mind.



With the help of our 32+ years of experience, we adeptly complete our Replumbs within impressive timelines. We always welcome the opportunity to offer additional services over and above the Replumb scope. Whether it's a new water heater, tub or shower valve, or installing a new lavatory faucet, we are willing to help.

## Resources For Your Replumb

Prior to beginning a Replumb, some of our clients find it beneficial to consult with our owner in their home. He can assist with steering the pipe replacement project in the right direction. We take pride in our extensive professional network and our unwavering commitment to assisting clients at every stage of the pipe replacement process.

## Assurance For Our Clients

Risks of losses from postponing water system replacements can result in water damage, and in some cases structural damage. Our post-Replumb customers rest easy knowing their property will continue to be flood-free.

## Your Vision, Our Expertise

Our new piping system process design is centered around your needs and objectives. We create only the most optimal and most durable solutions for our clientele. We meticulously assess viable material options, workflows, and installation methods in order to provide our Replumb customers the best water system possible.

## Financing Options

Whether you're planning a Replumb project for your home, or represent an HOA in need of funding for a pipe replacement, we are always happy to refer our loan and capital acquisition partners who can assist with the needs of your project.

**TORMENTED BY PIPE  
PROBLEMS?**

**CALL US FOR A TURNKEY  
SOLUTION.**

**GET AN INSTANT ONLINE  
QUOTE AT REPLUMBS.COM**

## PHONE

**Denver/Metro (303) 388-9090  
CO Springs (719) 495-9090**

## EMAIL

**info@replumbs.com**

## WEB

**replumbs.com ▶**



“I hired Jamey as a Replumber in 2004, and hired Jamey more than once. I have hired Jamey to work on multiple properties for me and I have referred him out to multiple investors and real estate agents alike. I have been nothing but impressed with his professional services. His company replumbed properties for me and never has he asked for more than the bidded amount. He has always been on time and when there has been a problem, he has always jumped on it. I will continue to use Jamey on any projects that would require his services.”

**Sean Rudner**

Woodland Development, StockPKG



# From Permits to Replumbing to Paint.



Denver/Metro: (303) 388-9090  
CO Springs: (719) 495-9090  
Toll Free: (888) 842-9342  
info@replumbs.com  
replumbs.com